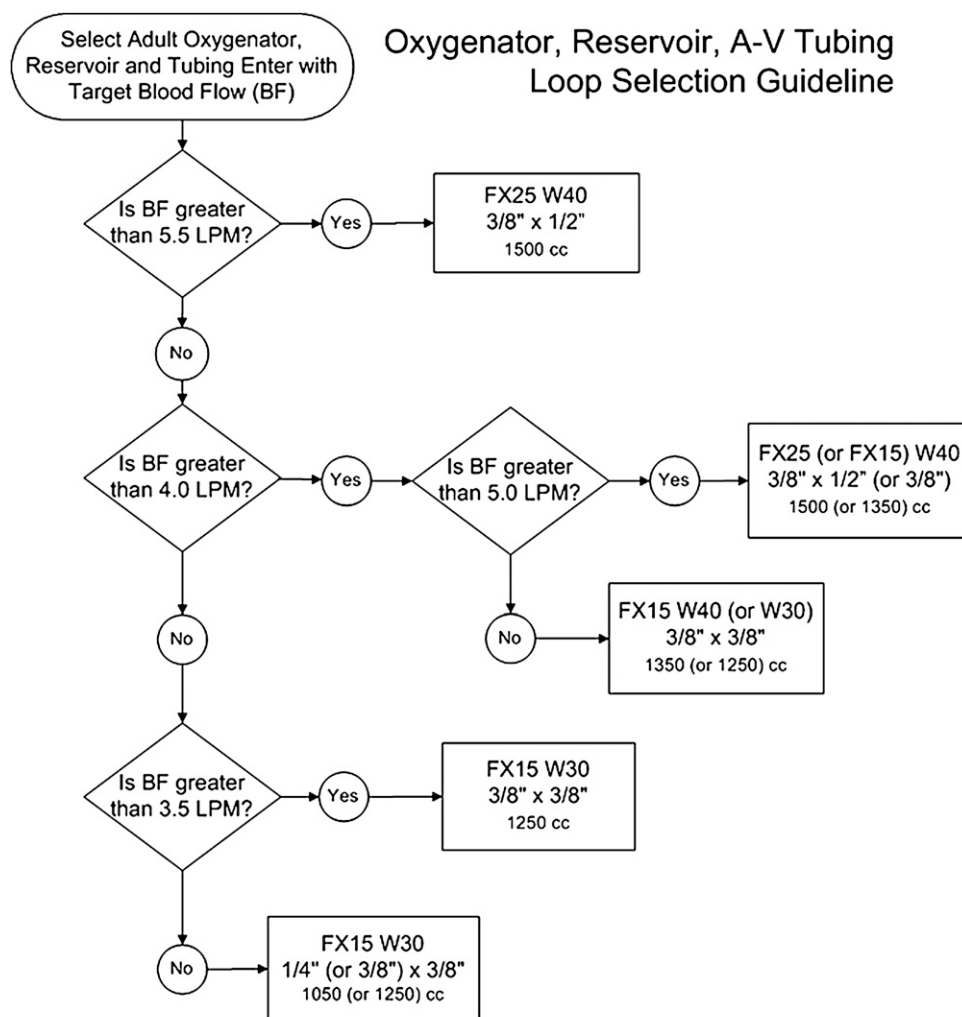


Erratum

Bronson SL, Riley JB, Blessing JP, Ereth MH, Dearani JA. Prescriptive Patient Extracorporeal Circuit and Oxygenator Sizing Reduces Hemodilution and Allogeneic Blood Product Transfusion during Adult Cardiac Surgery. *J Extra Corpor Technol.* 2013;45:167–72.

Figure 1: In the original manuscript the process (select FX25 W40) connected to the “Yes” for the first decision question “Is BF greater than 5.5 LPM?” was reversed with the process (Select FX25 (or FX15) W40) connected to the “Yes” response to the question “Is BF greater than 5.0 LPM?”.



FX15, FX25, W40 and W30 are trademarks of Terumo Cardiovascular Inc. The volumes are the crystalloid dynamic prime requirements for the perfusion circuits prior to autologous priming. Target blood flow is based on BSA and Cardiac Index = 2.4 L/min/m² and may be adjusted for BMI or LBM. Values in parentheses are optional set-ups based on patient parameters.

Figure 1. Flowchart depicts the selection process for the right-sized oxygenator, reservoir, and tubing arterial–venous loop. FX25 W40, FX15 W40, and FX15 W30 are Terumo trademark names for oxygenators and reservoirs. The volumes are minimal crystalloid circuit prime volumes before autologous priming.